

# Bleach Germicidal Wipes



Kills *C. diff* in  
**3 MINUTES**

Health Canada  
- registered to  
kill *C. diff* spores  
in 3 minutes

in an ever-changing healthcare environment use

## Ready-to-Use Bleach Cleaner Disinfectant Wipes

### Proven Efficacy

- ▶ Health Canada registered to kill 66 pathogens.
- ▶ Designed to kill microorganisms that cause HAIs.
- ▶ Kills viruses in 1 minute.
- ▶ *C. difficile* sporicidal efficacy tested in the presence of 3-part organic soil load.

### Trusted by Healthcare Facilities

- ▶ Over 25 peer-reviewed articles cite bleach-based disinfection protocols as key components of infection prevention strategies.
- ▶ Meets PIDAC recommendations for disinfecting surfaces in patient care areas.<sup>1</sup>

### Optimized for Extended Usage

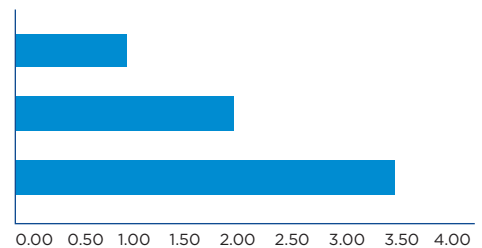
- ▶ Compatible with common healthcare surfaces including plastics and stainless steel.
- ▶ Recommended in medical equipment cleaning and care guides for external surfaces.<sup>2</sup>

### How much residue can your bleach wipe leave behind?

Clorox Healthcare™ Bleach Germicidal Wipes

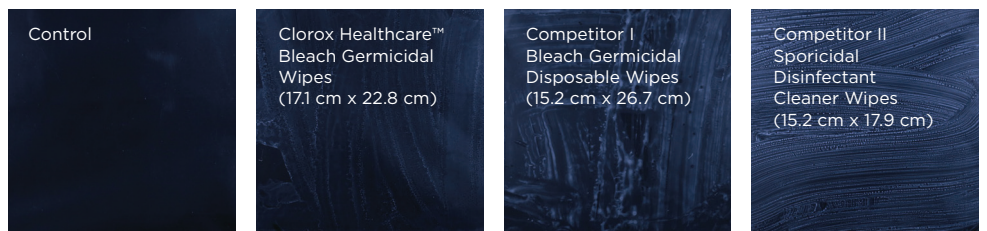
Competitor I - Bleach Germicidal Disposable Wipes

Competitor II - Sporicidal Disinfectant Cleaner Wipes



Normalized % solids from formula<sup>3</sup>

### Visibly Less Residue vs. Competitor Bleach Wipes



30 cm x 30 cm clear acrylic tiles wiped once with similarly-sized bleach wipes and allowed to dry.

1. Best Practices for Environmental Cleaning for Prevention and Control of Infections in All Health Care Settings, 3rd Edition. April 2018. Accessed December 2022.

2. Consult medical equipment warranty information and equipment care and cleaning guides prior to selecting and using any surface disinfectant.

3. Laboratory testing conducted to measure percentage solids in disinfectant formula. Completed in 2017.

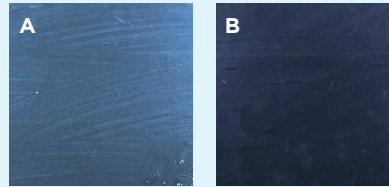
# Clorox Healthcare™ Bleach Germicidal Wipes

Effective against 66 pathogens	Kill Time
<b>Bacteria</b>	
<i>Acinetobacter baumannii</i>	30 seconds
<i>Bordetella pertussis</i>	30 seconds
<i>Campylobacter jejuni</i>	30 seconds
Carbapenem resistant <i>Klebsiella pneumoniae</i> (CRKP)	30 seconds
<b>Clostridium difficile spores</b>	<b>3 minutes</b>
Community Acquired Methicillin resistant <i>Staphylococcus aureus</i> (CA-MRSA)	30 seconds
<i>Enterobacter aerogenes</i>	30 seconds
<i>Enterobacter cloacae</i>	30 seconds
Vancomycin resistant <i>Enterococcus faecalis</i> (VRE)	30 seconds
<i>Enterococcus hirae</i>	30 seconds
ESBL (Extended Spectrum Beta Lactamase) producing <i>Escherichia coli</i>	30 seconds
ESBL (Extended Spectrum Beta Lactamase) producing <i>Klebsiella pneumoniae</i>	30 seconds
<i>Escherichia coli</i> O157:H7	30 seconds
<i>Escherichia coli</i> New Dehli Metallo-Beta Lactamase-1 (NDM-1 <i>E. coli</i> )	30 seconds
<i>Klebsiella pneumoniae</i>	30 seconds
<i>Klebsiella pneumoniae</i> New Dehli Metallo-Beta Lactamase-1 (NDM-1 <i>K. pneumoniae</i> )	30 seconds
Linezolid resistant <i>Staphylococcus aureus</i> (LRSA)	30 seconds
<i>Listeria monocytogenes</i> ( <i>Listeria</i> )	30 seconds
<i>Legionella pneumophila</i>	30 seconds
Methicillin resistant <i>Staphylococcus aureus</i> (MRSA)	30 seconds
Multi-drug resistant <i>Enterococcus faecium</i> (MDR <i>E. faecium</i> )	30 seconds
<i>Proteus mirabilis</i>	30 seconds
<i>Pseudomonas aeruginosa</i> ( <i>Pseudomonas</i> )	30 seconds
<i>Salmonella enterica</i> tested as <i>Salmonella choleraesuis</i>	30 seconds
<i>Serratia marcescens</i>	30 seconds
<i>Shigella dysenteriae</i>	30 seconds
<i>Staphylococcus aureus</i>	30 seconds
<i>Staphylococcus epidermidis</i> (coagulase-negative staphylococci)	30 seconds
<i>Streptococcus pneumoniae</i> (Strep)	30 seconds
<i>Streptococcus pyogenes</i> (Strep)	30 seconds
Vancomycin intermediate resistant <i>Staphylococcus aureus</i> (VISA)	30 seconds
Vancomycin resistant <i>Staphylococcus aureus</i> (VRSA)	30 seconds
<b>Mycobacterium</b>	
<i>Mycobacterium bovis</i> (Tuberculosis -or- TB)	3 minutes
<b>MOLD, MILDEW, FUNGI</b>	
<i>Aspergillus brasiliensis</i> tested as <i>Aspergillus niger</i> (mildew)	5 minutes
<i>Candida albicans</i>	5 minutes
<i>Candida glabrata</i>	5 minutes
Trichophyton interdigitale [formerly Trichophyton mentagrophytes] (Athlete's Foot Fungus)	5 minutes
<b>NON-ENVELOPED VIRUSES</b>	
Adenovirus type 2 (Strain Adenoid 6) (common cause of respiratory infections)	1 minute
Enterovirus type D68	1 minute
Human Hepatitis A Virus (HAV)	1 minute
Norovirus (as Feline Calicivirus)	1 minute
Poliovirus type 1, Strain Brunhilde	1 minute
Poliovirus type 1, Chat Strain	1 minute
Rhinovirus type 37 (a leading causative agent of the common cold) (Strain 151-1)	1 minute
Rotavirus (causative agent of viral diarrhea)	1 minute
<b>ENVELOPED VIRUSES</b>	
Avian Influenza A Virus	1 minute
Avian Influenza A (H5N1) virus	1 minute
HIV [Human Immunodeficiency Virus] [type 1]	1 minute
Human Coronavirus (additional causative agent of the common cold)	1 minute
Human Hepatitis B Virus (HBV) (as duck HBV)	1 minute
Human Hepatitis C Virus (HCV) (as bovine diarrhea virus)	1 minute
Hepatitis A virus	1 minute
Human Herpes virus type 2 (causative agent of genital herpes)	1 minute
Influenza A Virus (representative of the common flu virus)	1 minute
Influenza B Virus	1 minute
Measles Virus	1 minute
MERS - Coronavirus (Middle East Respiratory Syndrome Coronavirus) (MERS-CoV)	1 minute
Respiratory syncytial virus (RSV) (cause of respiratory infections in infants) Strain Long	1 minute
SARS - Associated Coronavirus (SARS - CoV)	1 minute
SARS-CoV-2 (virus that causes COVID-19)	1 minute
Swine Influenza A (H1N1) virus	1 minute
<b>BLOODBORNE PATHOGENS (VIRUS)</b>	
HIV Human Immunodeficiency Virus type 1	1 minute
Human Hepatitis B Virus (HBV)	1 minute
Hepatitis C Virus (HCV) Bovine Viral Diarrhea virus as a surrogate virus for human Hepatitis C virus	1 minute
<b>NON-ENVELOPED PARVOVIRUSES</b>	
Canine parvovirus (Strain Cornell)	3 minutes
Feline parvovirus (Feline panleukopenia virus) Strain Philips-Roxane	3 minutes

**2/3** of healthcare disinfectant decision makers would use bleach in more places if they knew bleach residue could be easily removed.<sup>4</sup>

**Residue can be wiped away after**

- ▶ 1 wipe
- ▶ 10 wipes
- ▶ 30 wipes



Plastic tiles wiped 30 times over the course of 2 weeks with Clorox Healthcare™ Bleach Germicidal Wipes (A) then polished with a damp cloth (B).

## For Hard Surfaces - CLOROX HEALTHCARE™ BLEACH GERMICIDAL WIPES, DIN 02465671



### Clinical Wipes 15.2 cm x 12.7 cm (6" x 5")

**Designed for:** daily disinfection, high-touch surfaces and medical equipment

Item No. 55894, 150 ct. canister, 6/case



### Multi Purpose Wipes 17.1 cm x 22.8 cm (6.75" x 9")

**Designed for:** daily disinfection, patient room surfaces and medical equipment

Item No. 01308, 70 ct. canister, 6/case



### Terminal Wipes 30.5 cm x 30.5 cm (12" x 12")

**Designed for:** discharge disinfection, large areas

Item No. 01309, 110 ct. bucket, 2/case

Item No. 01310, 110 ct. refill, 2/case

**CLOROXPRO**

For more information, contact your Clorox sales representative or call 1-866-789-4973.  
Email: [healthcare@clorox.com](mailto:healthcare@clorox.com)  
Visit: [www.cloroxpro.ca](http://www.cloroxpro.ca)

© 2023 Clorox Professional Products Company, 150 Biscayne Crescent, Brampton, ON L6W 4V3.