



HEALTHCARE™

COMPATIBLE™

OUR PROGRAM:

Clorox's approach to compatibility testing

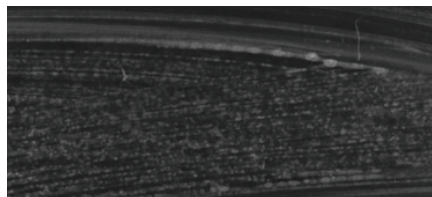
The Clorox Healthcare Compatible™ Program

In 2015, Clorox launched the Clorox Healthcare Compatible™ program to rigorously evaluate the compatibility of materials and equipment commonly used in healthcare with our range of disinfectants.

Our scientists continue to develop industry best practices to help our customers feel confident about the performance of our products.



Soak test. Material submerged in disinfectant chemistry for 4 days with a wet/dry cycle each day. Provides data on durability of material after intense exposure to chemical.



Wipe test. Surface wiped and allowed to dry 180 times. Simulates real-world exposure to wipes and residue build-up. Provides data on durability of material after intense exposure to chemical.



Stress test. Hole drilled near material edge, and vertical cut made to create high-stress area. Material immersed in disinfectant for up to 72 hours. Provides data on durability of material after intense exposure to chemical.

Our three-prong approach to compatibility testing determines how we rate the compatibility of disinfectants with commonly found materials in the healthcare setting.

Learn more at:
www.cloroxhealthcare.com/compatible

The Clorox Healthcare Compatible™ Star Rating System

3-Star System



No visible surface damage or effect on the material is likely to occur when used according to label directions. No change to the integrity of the material is expected.



Some visible surface damage such as tarnishing or clouding may be seen with long-term exposure. Little to no effect on material integrity is expected. Periodic wiping of surfaces with a clean damp cloth to remove residue can help to minimize damage.



Visible damage to the surface is likely to occur with long-term exposure and some effect on material integrity is possible. Surfaces should be wiped with a clean damp cloth immediately after the contact time has been reached to reduce the risk of damage. Users should evaluate the risk of surface damage vs. benefits of disinfectant efficacy against pathogens to determine whether the product is appropriate for use.

CLOROX HEALTHCARE: DISINFECTANT COMPATIBILITY CHART



Clorox Healthcare®
Bleach
Germicidal
Wipes



Clorox Healthcare®
Fuzion®
Cleaner
Disinfectant



Clorox Healthcare®
Hydrogen
Peroxide Cleaner
Disinfectant
Wipes



Clorox Healthcare®
VersaSure™
Cleaner
Disinfectant
Wipes

Surface

Examples

| | Surface | Examples | Clorox Healthcare® Bleach Germicidal Wipes | Clorox Healthcare® Fuzion® Cleaner Disinfectant | Clorox Healthcare® Hydrogen Peroxide Cleaner Disinfectant Wipes | Clorox Healthcare® VersaSure™ Cleaner Disinfectant Wipes |
|----------------------|----------------------------------|---|--|---|---|--|
| POLYMERS | Acrylics (PMMA) | Phone displays, incubators, X-ray protective shields, isolettes | ★ ★ ★ | ★ ★ ★ | ★ | ★ ★ |
| | ABS | Keyboards, pumps, medical devices for blood access, enclosures for electrical and electronic assemblies | ★ ★ ★ | ★ ★ ★ | ★ | ★ ★ |
| | High-Density Polyethylene (HDPE) | Packaging, trays, bottles, and other industrial plastic products | ★ ★ ★ | ★ ★ ★ | ★ ★ ★ | ★ ★ ★ |
| | Marlite® | Wall panels | ★ ★ ★ | ★ ★ | ★ | ★ ★ ★ |
| | Polypropylene (PP) | Hard molded plastic used for bottles, trays, device exteriors | ★ ★ ★ | ★ ★ ★ | ★ ★ ★ | ★ ★ ★ |
| | Polyurethane (PU) | Upholstery, lights, tubing, mattress covers | ★ | ★ | ★ | ★ |
| | Polyvinylchloride (PVC) | Furniture, mattress covers, tubing, floors | ★ ★ ★ | ★ ★ ★ | ★ ★ ★ | ★ ★ ★ |
| | Tritan™ Copolyester | Clear polymer device components | ★ ★ ★ | ★ ★ ★ | ★ ★ ★ | ★ ★ ★ |
| | Vinyl fabric | Furniture, exam tables, curtains | ★ ★ ★ | ★ ★ ★ | ★ | ★ ★ ★ |
| | Polycarbonate | Lenses, housings, IV connectors | ★ ★ ★ | N/A | ★ ★ | ★ ★ |
| GLASS | Glass | X-ray shields, glass partitions, wall panels, bathroom/shower enclosures | ★ ★ ★ | ★ ★ ★ | ★ ★ ★ | ★ ★ ★ |
| | Sapphire Glass | Device screens, protective covers | ★ ★ ★ | ★ ★ ★ | ★ ★ ★ | ★ ★ ★ |
| METALS | Aluminum (Multipurpose 6061) | Walkers, isolation carts, seating | ★ | ★ | ★ | ★ ★ ★ |
| | Aluminum Silicate | Instrument trays, walkers, crutches, folding stretchers | ★ ★ ★ | ★ ★ ★ | ★ ★ ★ | ★ ★ ★ |
| | Brass | Decorative items, pipe fittings | ★ | ★ | ★ | ★ |
| | Chrome Plated Metal | Bathroom fixtures, IV Poles, gurneys, equipment racks, stools, chairs, grab bars | ★ ★ ★ | ★ ★ ★ | ★ | ★ |
| | Galvanized Steel | Carts, ductwork, pipes, nails, bolts | ★ | ★ | ★ | ★ ★ ★ |
| | Stainless Steel 316 | Sinks, wheelchairs, bed frames, cabinets, carts, trolleys, furniture, fixtures, equipment, counters | ★ ★ ★ | ★ ★ ★ | ★ ★ ★ | ★ ★ ★ |
| HARD POROUS SURFACES | Corian® | Countertops | ★ ★ ★ | ★ ★ ★ | ★ ★ ★ | ★ ★ ★ |
| | EOS* | Countertops | ★ | N/A | N/A | N/A |
| | Glazed Ceramic | Tiles | ★ ★ ★ | ★ ★ ★ | ★ | ★ |
| | Glazed Porcelain | Bathroom tiles, toilets, sinks | ★ ★ ★ | ★ ★ ★ | ★ ★ ★ | ★ ★ ★ |
| | Natural Marble | Decorative countertops | ★ ★ ★ | ★ ★ ★ | ★ ★ | ★ ★ ★ |
| | Porcelain Enamel | Coatings on metal appliances, bathtubs | ★ ★ ★ | ★ ★ ★ | ★ ★ ★ | ★ ★ ★ |
| | Sealed Marble | Decorative countertops | ★ ★ ★ | ★ ★ ★ | ★ ★ ★ | ★ ★ ★ |
| | Sealed Granite | Decorative countertops | ★ ★ ★ | ★ ★ ★ | ★ ★ ★ | ★ ★ ★ |

Marlite® is a registered trademark of Marlite, Inc.
Tritan™ is a trademark of Eastman Chemical Company

Corian® is a registered trademark of DuPont Building Innovations
*Testing completed by manufacturer. Fuzion was not included in testing.